

FOR SALE - 9.17 ACRES - NORTH POINT DRIVE

CITY OF ALPHARETTA, FULTON COUNTY, GEORGIA



COMMENTS

This opportunity consists of 9.17 acres of undeveloped land located on North Point Drive within the city limits of Alpharetta in Fulton County, Georgia. The property is zoned for 250,000 square feet of office use as well as a small retail component.

PROPERTY HIGHLIGHTS

- LOCATION:** The property is located on the north side of North Point Drive just west of its intersection with Haynes Bridge Road.
- LOT SIZE:** 9.17 acres
- ZONING:** PSC (Planned Shopping Center)
- ADDITIONAL INFORMATION:** For additional information, please click the tabs below:
- [Demographics](#) (0.4 MB PDF)
 - [Survey/Site Plan](#) (1.7 MB PDF)
 - [Zoning](#) (0.1 MB PDF)
- PRICE:** \$350,000.00 per acre.

MAJOR & ARROLL, LLC
COMMERCIAL REAL ESTATE

Information contained herein has been obtained from the owner of the property or from other sources we deem reliable. We have no reason to doubt its accuracy but cannot guarantee that it is correct.



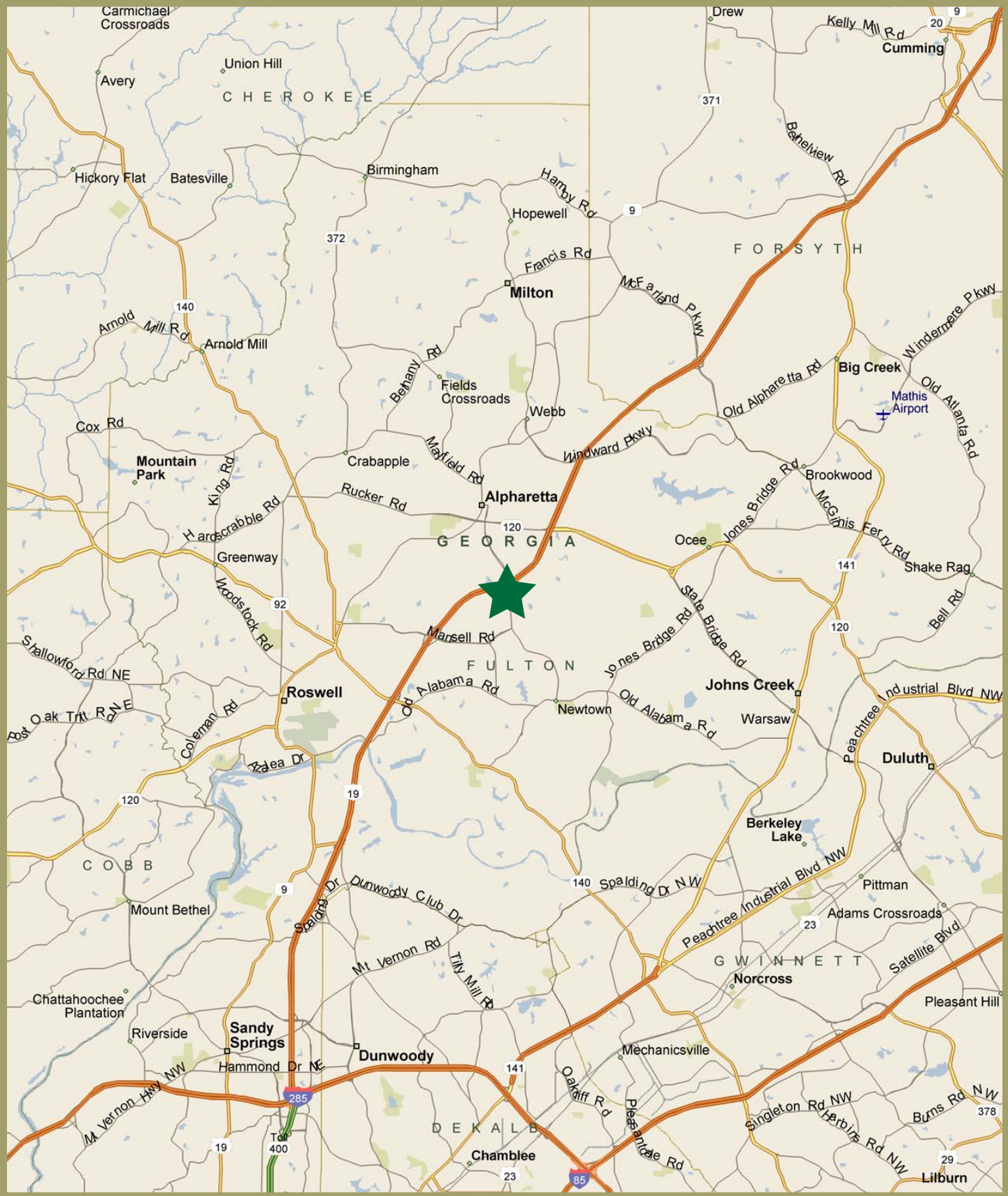
PRESENTED BY:

Barry Major
bmajor@majorandarroll.com
(404) 845-0056

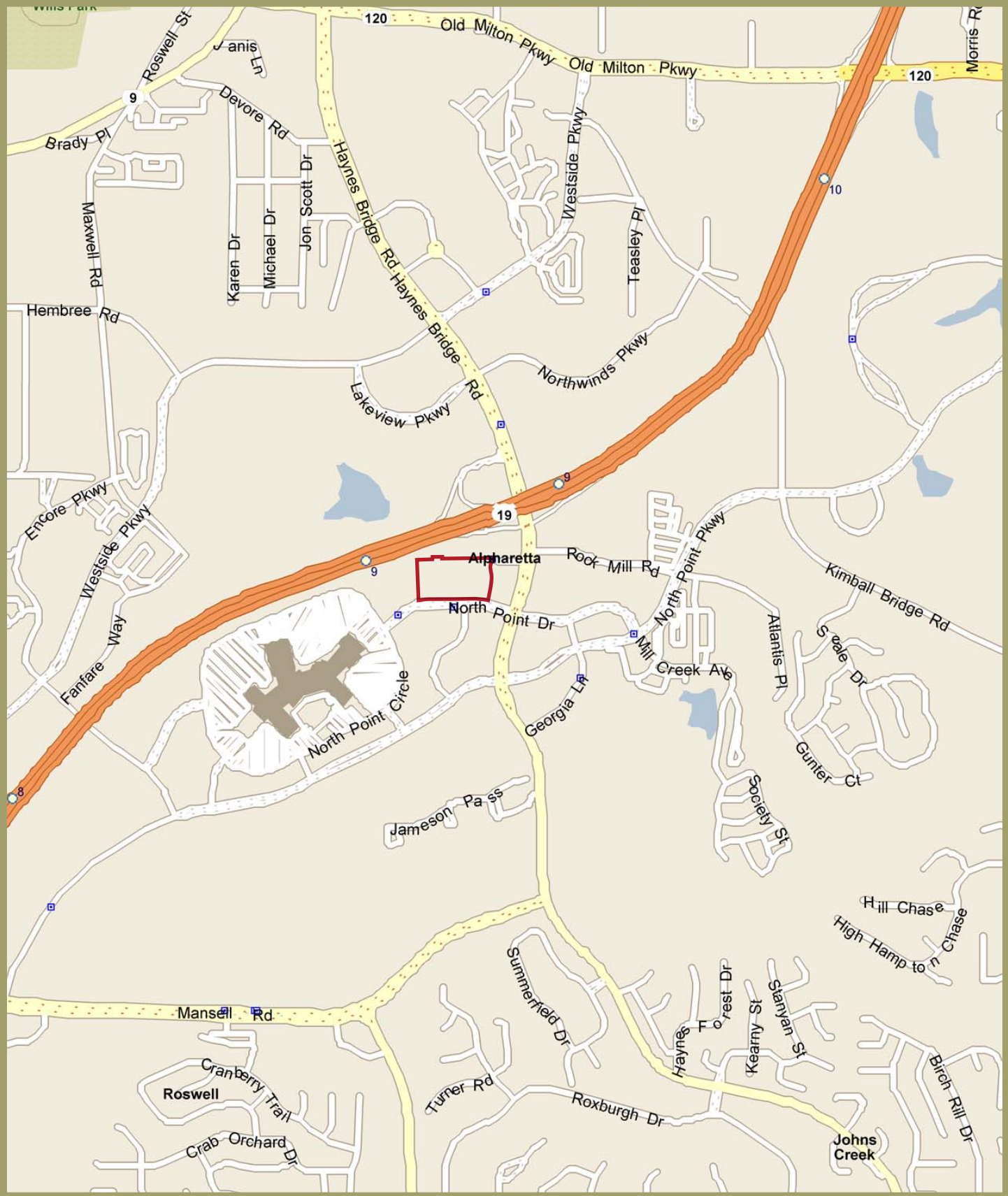
Rich Arroll
rarroll@majorandarroll.com
(404) 250-9612

Major & Arroll, LLC
91 West Wieuca Road
Building B, Suite 100
Atlanta, Georgia 30342
Fax: (404) 250-9613
www.majorandarroll.com

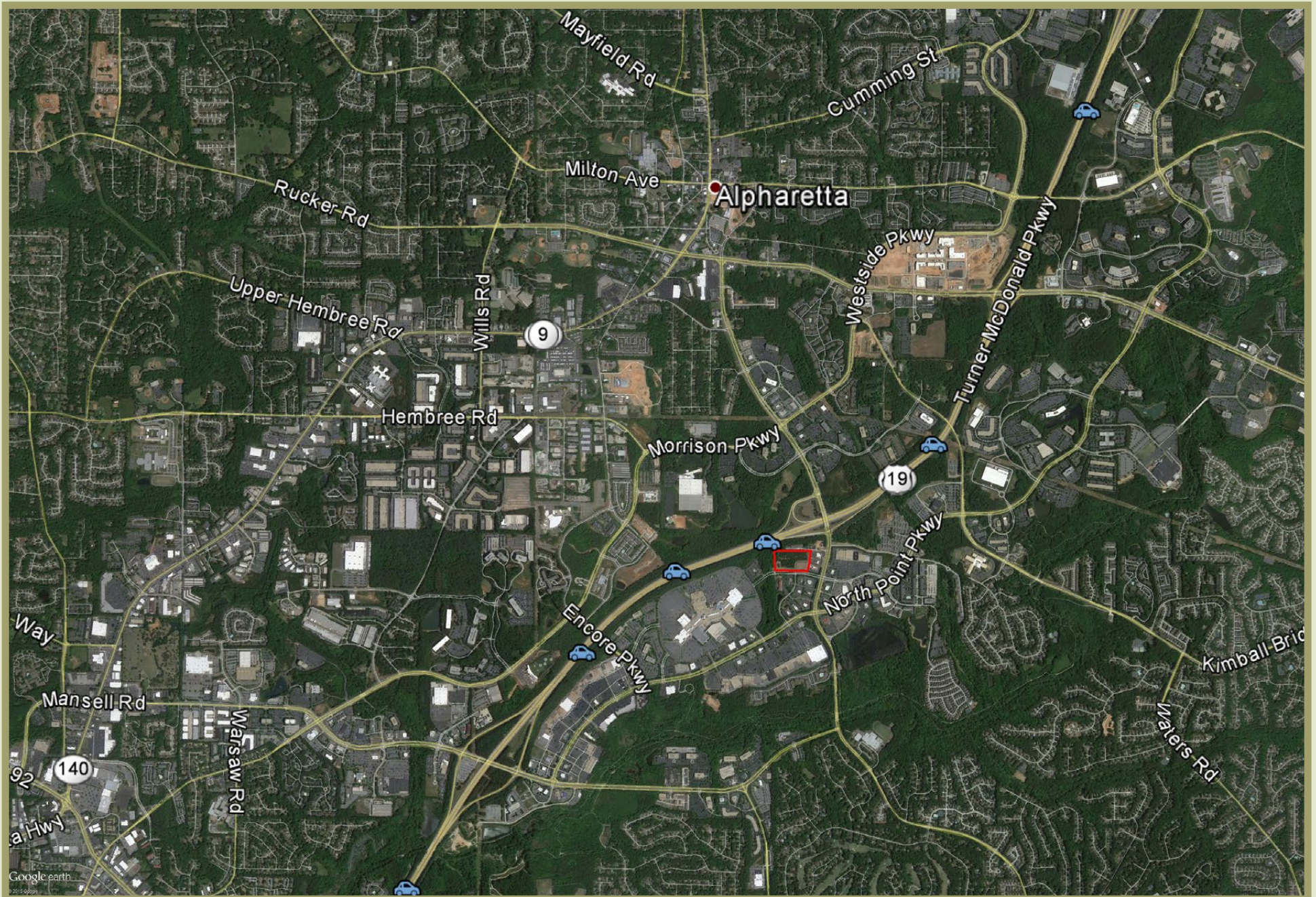
LOCATION MAP



LOCATION MAP



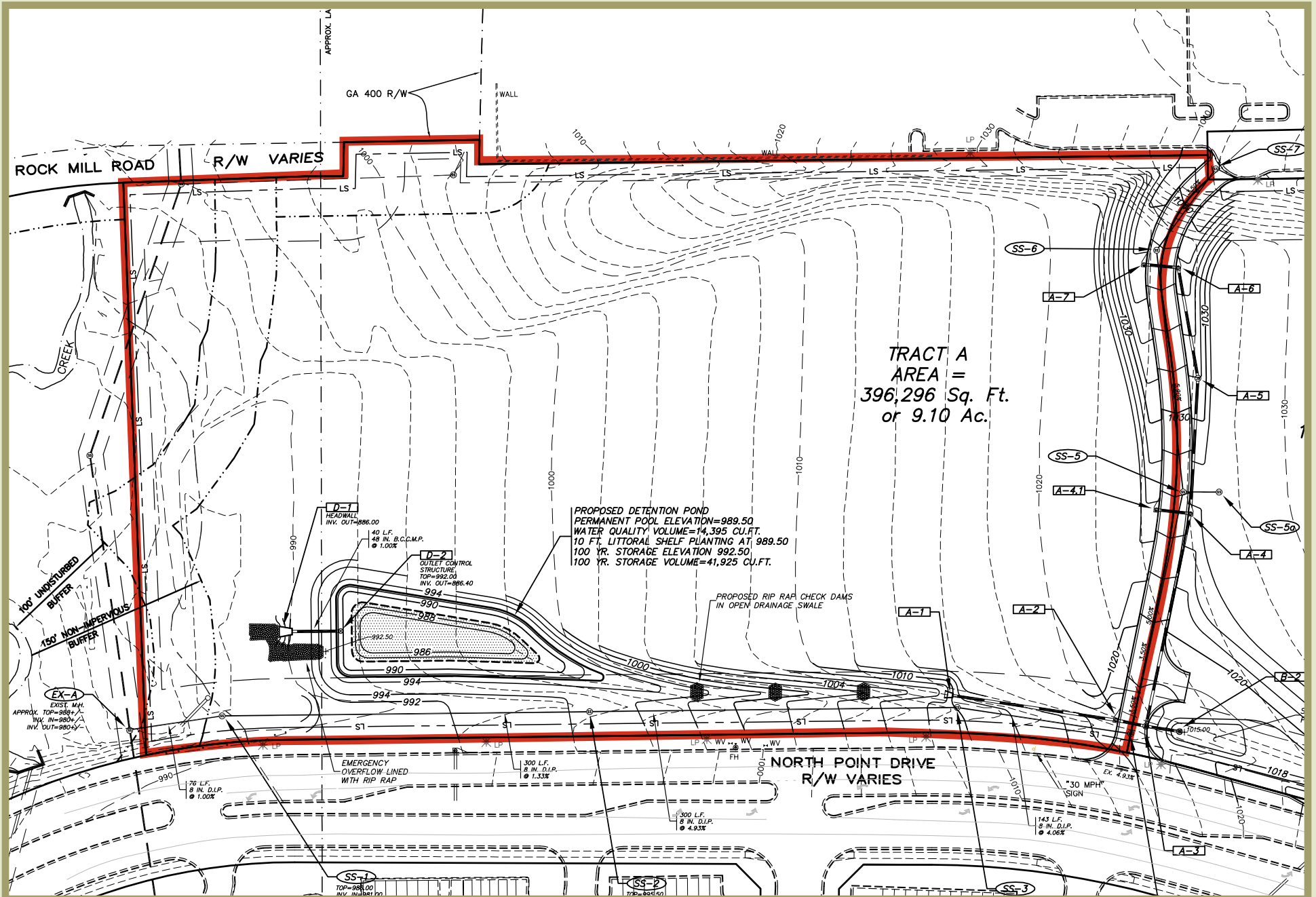
AERIAL



AERIAL



SITE PLAN



SITE PLAN

