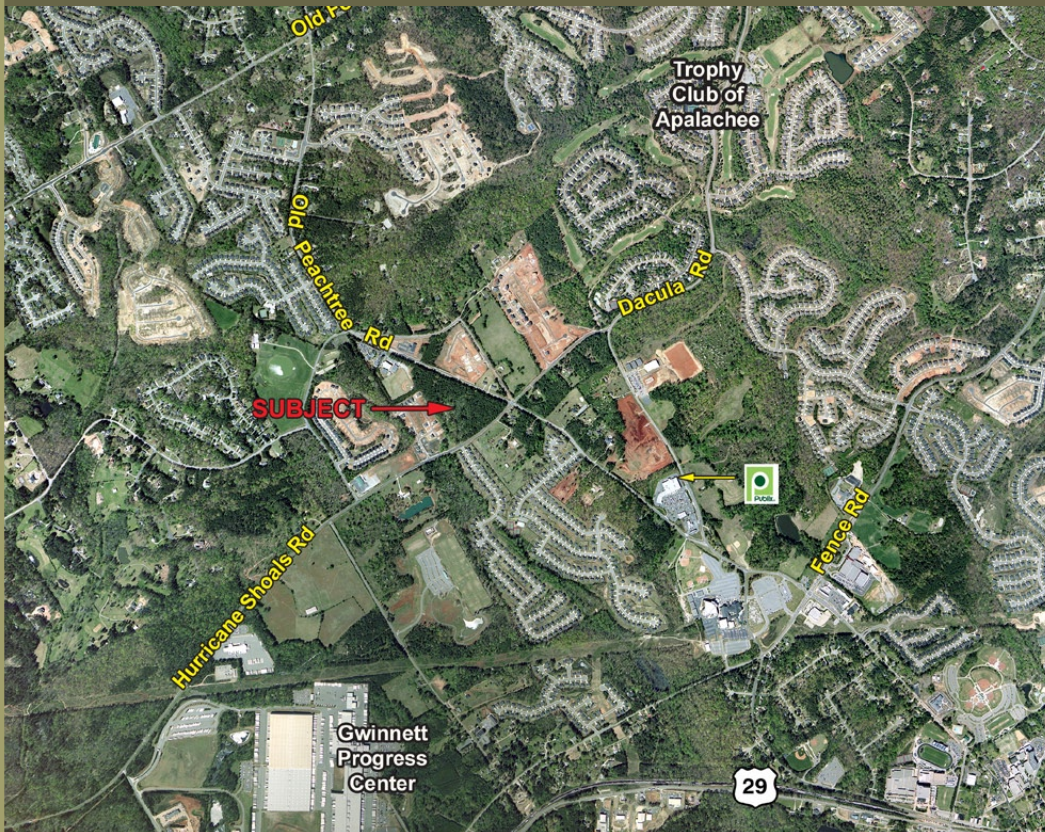


17.5 ACRES AVAILABLE FOR SALE

OLD PEACHTREE RD & HURRICANE SHOALS RD



COMMENTS

This property is located in an area experiencing substantial commercial and residential growth. Old Peachtree Road is a major east/west artery for Gwinnett County. Additional information is available upon request.

PROPERTY HIGHLIGHTS

- LOCATION:** The 17.5 subject property is located in the southwest corner of the intersection of Old Peachtree Road and Hurricane Shoals Road in unincorporated Gwinnett County.
- FRONTAGE:** Approximately 2,105 feet on Old Peachtree Road
Approximately 1,071 feet on Hurricane Shoals Road
- ZONING:** The entire tract is zoned C-2 with conditions. The conditions are included in this information package.
- TRAFFIC COUNTS:** xxx cars per day on Old Peachtree Road
xxx cars per day on Hurricane Shoals Road
- ASKING PRICE:** \$185,000 per acre.

PRESENTED BY:

Major Properties, INC
91 West Wieuca Road
Building B, Suite 100
Atlanta - Georgia - 30342
Barry Major: (404) 845-0056
Fax: (404) 250-9613

